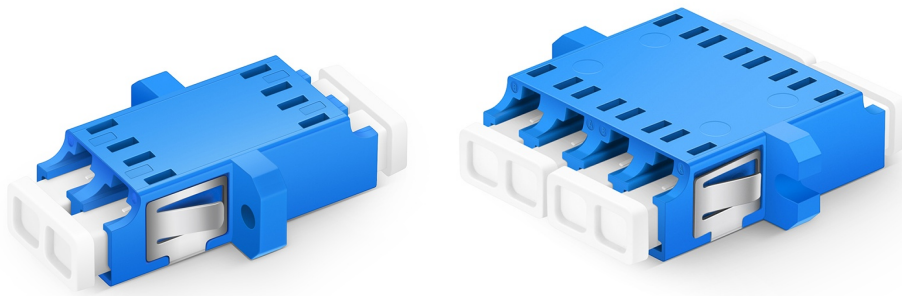


## BLACK-STONE LC Fiber Adaptors



BLACKSTONE LC duplex, quad, flanged, and flangeless fiber adaptors are constructed of engineered thermoplastic with precision zirconia ceramic split sleeves providing low loss fiber connections over high and low-temperature extremes. LC adaptors are suitable for any data center, central office, MDU, CATV, or PON cabling installations using LC connectors. LC adaptors are available with mounting flanges or flangeless for higher density applications.

### FEATUERS

- Low insertion loss
- High repeatability and high thermal stability
- Metal spring latch for panel retention
- Dust protection caps as standard
- Precision zirconia ceramic split sleeve
- Multiple colors identifying fiber type

### APPLICATION

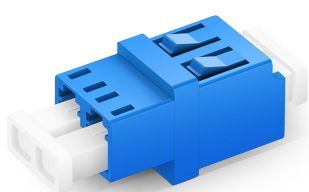
Single-mode and multimode LC duplex and quad, flanged, or flangeless fiber adaptors meet or exceed the requirements in TIA-568.3-D and TIA-604-10, FOCIS-10, GR-326, or IEC 61300 series, IEC 61754-20. Adaptors provide  $\leq 0.2$  dB insertion loss and support an operational temperature range of  $-40$  °C to  $+85$  °C and come with protective caps.

### STANDARDS

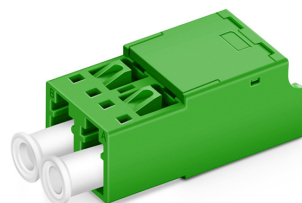
- TIA-568.3-D
- TIA-604-10, FOCIS-10
- GR-326 or IEC 61300 series
- IEC 61754-20
- RoHS

### MECHANICAL SPECIFICATIONS

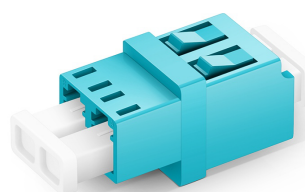
Insertion Loss Single-mode	< 0.2 dB
Insertion Loss Multimode	< 0.2 dB
Operating Temperature	$-40$ °C to $+85$ °C
Weight Simplex	5 grams
Weight Duplex:	9 grams



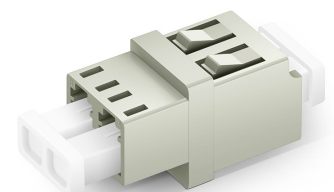
Blue(BU)



Green(GR)



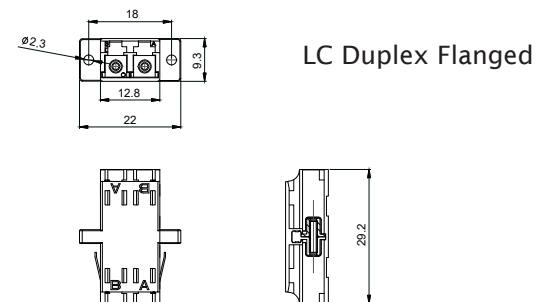
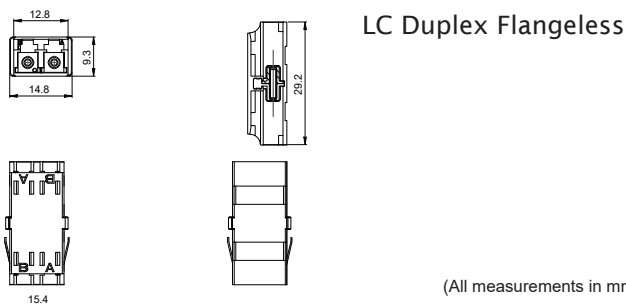
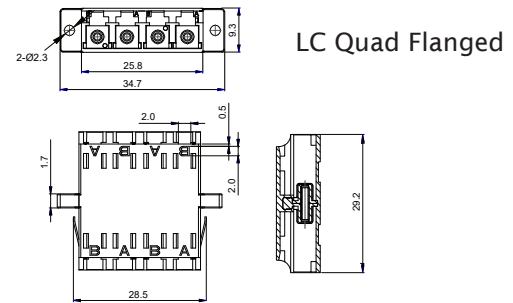
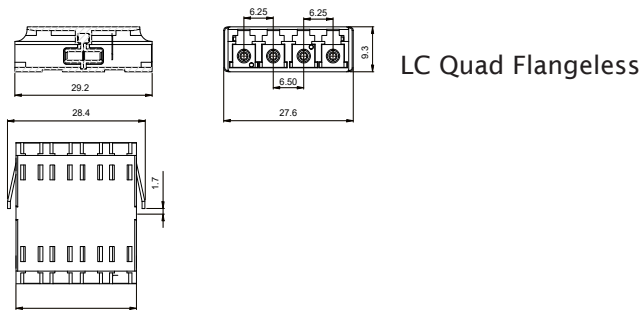
Aqua(AQ)



Beige(B)

Black-stone

## ELECTRONIC FILES



(All measurements in mm)

## ORDER INFORMATION

Description	Single mode	Multimode
Coupler LC, Duplex, zirconia ceramic sleeve, flanged	BS-DF-LCLC-SPC-**	BS-DF-LCLC-MPC-**
Coupler LC, Duplex, zirconia ceramic sleeve, flangeless	BS-D-LCLC-SPC-**	BS-D-LCLC-MPC-**
Coupler LC, Quad, zirconia ceramic sleeve, flanged	BS-QF-LCLC-SPC-**	BS-QF-LCLC-MPC-**
Coupler LC, Quad, zirconia ceramic sleeve, flangeless	BS-Q-LCLC-SPC-**	BS-Q-LCLC-MPC-**

\*\* is color

Colors available : blue, green, aqua and beige

Note: Adapters are sold individually bagged with a minimum order quantity of 50.