

Black-Stone Server Spring Cabinets SER

SER CABINET



FEATURES

- Surface finish: decreasing, pickling, phosphoric, powder coating. The thickness of powder coating is 80µm-100µm.
- Curved perforated front door and double section rear door enable equipment protection, reliable operation with ventilation rate above 80%.
- Double-section side panels, each panel can be easily assembled separately.
- The top and bottom wiring channel can be closed and adjustable.
- Backside with a pair of vertical cable management.
- Mounting rail with U mark.
- Efficient and solid cabinet connection. With earthing kits.
- Advanced lock.
- Optional plinth to meet under-base wiring.
- Full range of optional accessories.

STANDARD

Comply with ANSI/EIARS-310-D, DIN41491; PART1, IEC297-2, DIN41494; PART7, GB/T3047.2-92 standard. Compatible with metric, ETSI and 19-inch international standard.

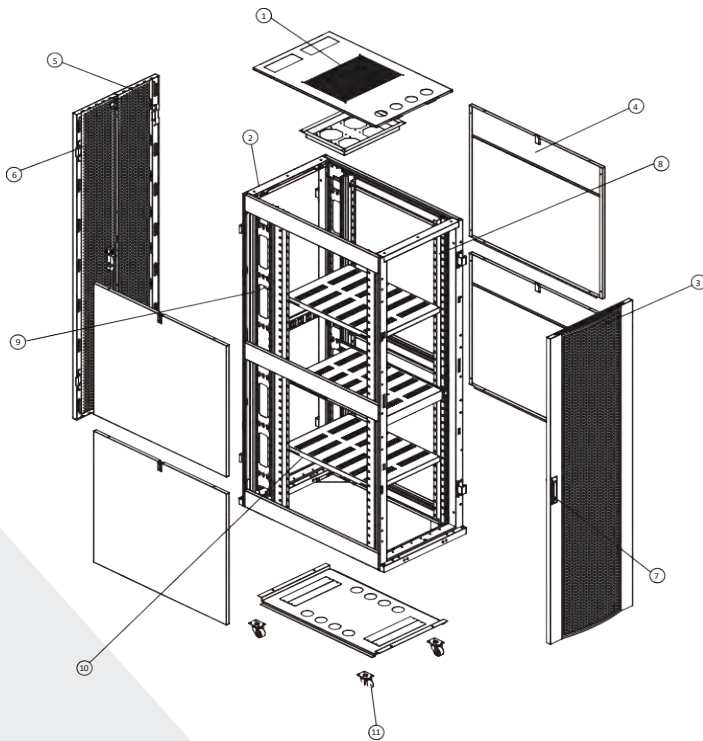
MATERIALS

Cold-rolled steel sheet. Thickness for frame 2.0mm, mounting rail 2.0mm, side panel 1.5mm, fixed shelf 1.5mm

APPLICATION

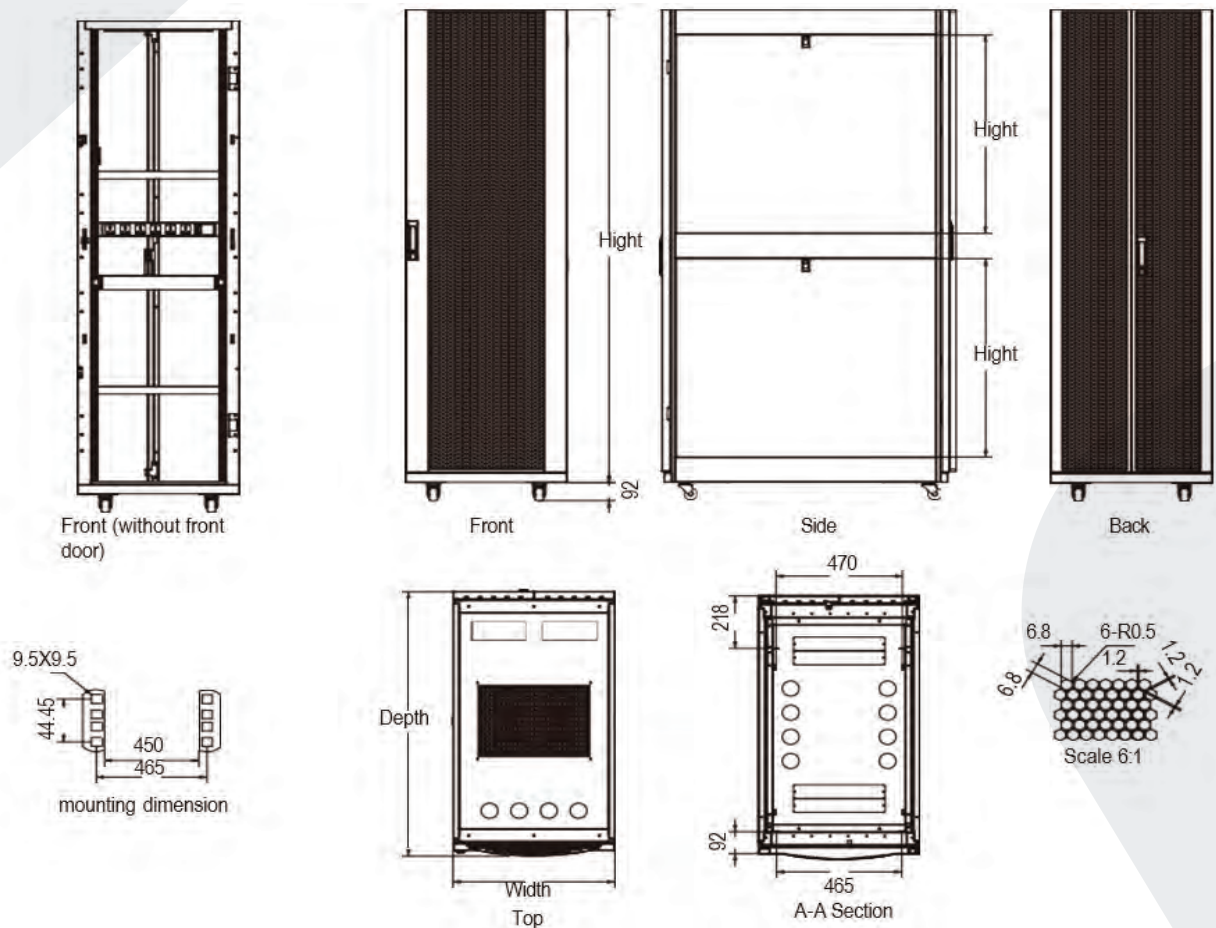
Widely applied in Finance, Securities and Data Centre and adapted by professional servers' network providers, like IBM, SUN, HP, COMPAQ, DELL, etc

STRUCTURAL



- 1. Top Cover
- 2. Frame
- 3. Front Door
- 4. Side Door
- 5. Left Rear Door
- 6. Right Rear Door
- 7. Lock
- 8. Mounting Rail
- 9. Vertical cable management
- 10. Fixed shelf
- 11. Heavy duty caster

DIMENSION (MM)





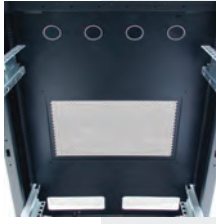
Lockable side panels
Are removable with handle for better handing.



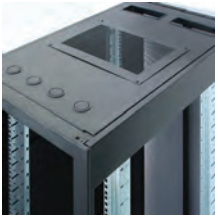
Doors
Are removable with locking latches and do not require tools.



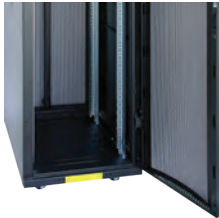
Cabinets
Are equipped with solid levelers and multi-directional casters.



Cabinet fans
Cabinets are equipped with four top mounting fans to help airflow for sever cooling.



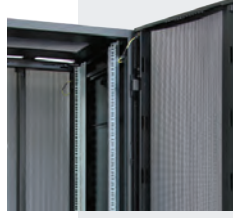
Heat management
For high-density server installations, a fan door is available.



Cabinet base
Is open to allow fresh airflow within the cabinet.



Doors
All doors are reversible and equipped with locking rotating latches.



Curved perforated door.
Are also available and provides maximum floor space utilization.



Fixed shelf for permanent installation



Sliding shelf for easy access to equipment



Cantilever Slab with front rackmount.



Keyboard panel
For regular size keyboard is available with or without top



Frame with scale mark scale number to help install the rack-mounted equipment.



Scale logo with a square hole.



Connection kits



Backside with a pair of vertical cable management



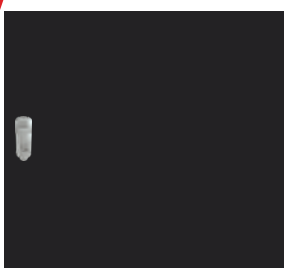
Enhanced hinge



Removable double-section side panel

DOORS

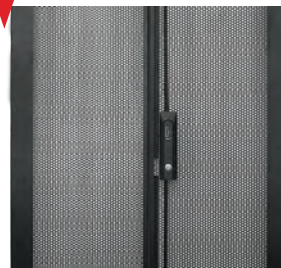
Steel casement door.



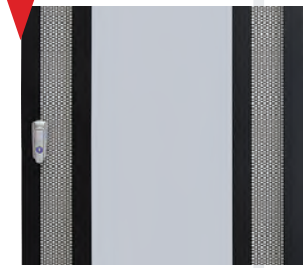
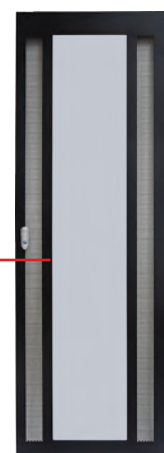
Curved perforated door.



Double swing steel door.



Smoky-gray glass door with both sides

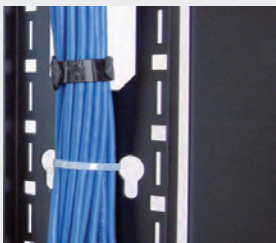
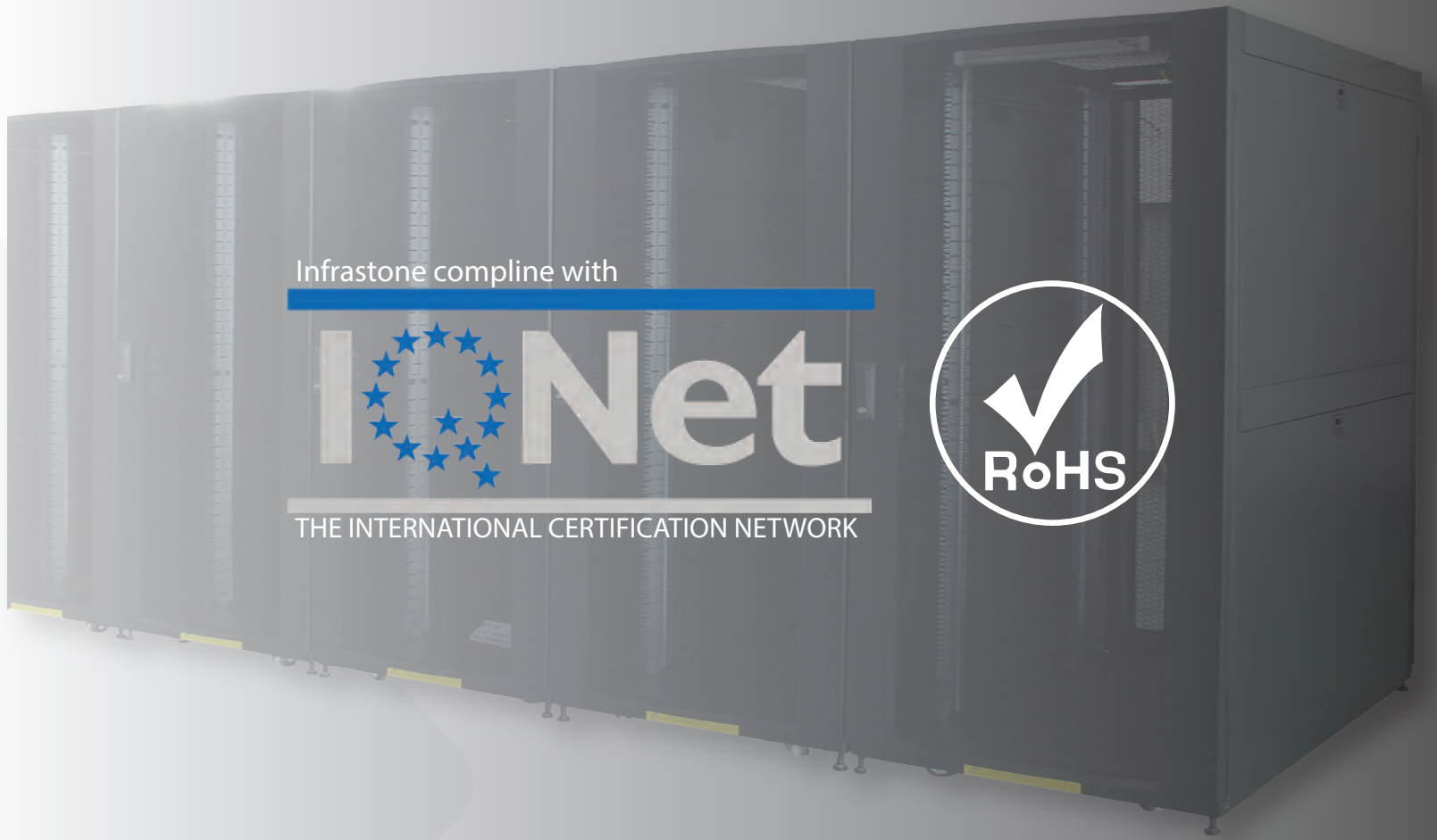


STANDARD ACCESSORIES

S/N	Specification	Qty	Unit	Material	surface finish	Remark
1	Top cover	1	Pcs	1.5mm cold rolled steel	Powder coated	—
2	Frame	2	Pcs	2.0mm cold rolled steel	Powder coated	—
3	Front door	1	Pcs	1.5mm cold rolled steel	Powder coated	K type door
4	Side panel	4	Pcs	1.5mm cold rolled steel	Powder coated	With lock
5	Left rear door	1	Pcs	1.5mm cold rolled steel	Powder coated	F type door
6	Right rear door	1	Pcs	1.5mm cold rolled steel	Powder coated	F type door
7	Lock	6	Pcs	—	—	—
8	Mounting rail	4	Pcs	2.0mm cold rolled steel	Powder coated	—
9	Mounting angle	6	Pcs	1.5mm cold rolled steel	Powder coated	—
10	Spacer	12	Pcs	—	—	Cabinet width:800mm
11	Heavy duty castors	4	Pcs	—	—	—
12	Feet	4	sets	—	—	—
13	Cage and nuts	40	Pcs	—	—	—
14	Wrench	1	Pcs	—	—	—

ORDER INFORMATION

PART NO.	CAPACITY/U	WIDTH/MM	DEPTH/MM	HEIGHT/MM	Carton measurement			VOLUME/CBM
					WIDTH/M	DEPTH/M	HEIGHT/M	
SER37-66-	37U	600	600	1800	0.65	0.65	1.80	0.7605
SER37-68-		600	800		0.65	0.85		0.9945
SER37-610-		600	1000		0.65	1.05		1.2285
SER37-88-		800	800		0.85	0.85		1.3005
SER37-810-		800	1000		0.85	1.05		1.6065
SER42-66-	42U	600	600	2000	0.65	0.65	2.00	0.845
SER42-68-		600	800		0.65	0.85		1.105
SER42-610-		600	1000		0.65	1.05		1.365
SER42-88-		800	800		0.85	0.85		1.445
SER42-810-		800	1000		0.85	1.05		1.785
SER42-81200-		800	1200		0.85	0.65	2.20	0.9295
SER47-68-	47U	600	800	2200	0.65	0.85		1.2155
SER47-610-		800	1000		0.65	1.05		1.5015
SER47-88-		800	800		0.85	0.85		1.5895
SER47-810-		800	1000		0.85	1.05		1.9635



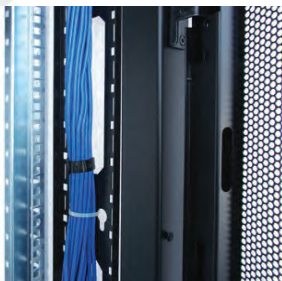
Vertical cable managers

Network cabinets are equipped with two vertical cable managers with doors to insure good cable organization.



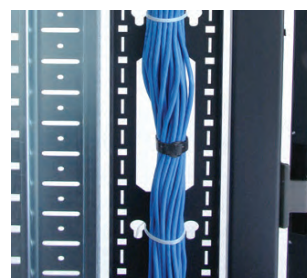
Cut-outs in the top

Allow for efficient routing of cables into the cabinet.



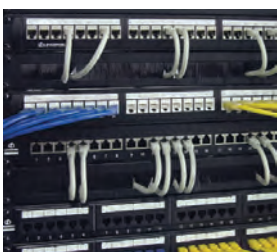
Vertical cable ladders

Are used to attach cable and power distribution units (PDU) in the cabinet.



Vertical cable trunk

Provides additional cable management.



Optional horizontal cable managers

Are available in different sizes.