

# ACCESSORIES

## VERTICAL CABLE MANAGEMENT

### Features

- Materials: 1.2mm cool rolled steel.
- Color: black/gray
- Features: overall one-shot stamped; convenient for disassembling& mounting.
- Dimension: width: 60mm, depth: 95mm

BSS511101-1



### Features

- Materials: 1.2mm cold rolled steel & ABS engineering plastics
- Color: black
- Frame: Independently designed product.
- The mounting plate can be opened on both sides.
- The perfect combination of metal and plastic.
- Features: Providing flexible, safe and effective management on various cables.

BSS511102-1



## FEET

### Features

- Load holding: 1: 125kg/pcs  
2: 150kg/pcs
- Features: adjustable height
- Applications: fixing cabinet, adjusting cabinet's gesture.

BSS511102-1



## CASTOR

### Features

- Load holding: 1: 150kg/pcs  
2: 240kg/pcs
- Wheel made from good quality nylon compound
- Features: free rotating, heavy loading.
- Mounting position: on the bottom of cabinet.
- Applications: moving cabinet easily to any direction.

BSS511402



BSS511403



## FRONT DOOR LOCK

### Features

- Name: cabinet lock
- Specifications: round lock (optional)
- Surface treatment: spray
- Characteristics: the key to universal
- Mounting position: the cabinet front door, back door and side door



BSS511501

BSS511503



BSS511502

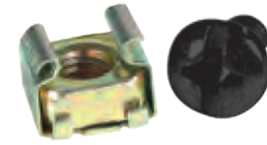
## SQUARE NUTS, SCREW

### Features

- Nuts: M6 spring square nuts
- Screw: M6\*12 screw
- Surface finish: zinc coating
- Applications: fixing cabinet and 19' EIA standard equipment.



BS511601



BS511602

## CONNECTOR

### Features

- Connecting cabinet without nuts, easy and safe operation



BSS511701

## DIGITAL TEMPERATURE UNIT

### Standard

- Reliable & intelligent Industrial Temperature Control Instrumentation.

### Features

- Power supply: 85-265VAC
- Sensor: International cu50 resistance
- Measuring range: -20—80
- Measurement accuracy: 1.0(+/-1.0%)
- Sampling rate: 2/second
- Output form: double relays(one group for master control, another one for alarm) Sensor's differential gap adjustable.
- Sensor support open circuit alarm
- Power consumption: <5W
- Ambient temperature: -10-50

BSS512001



## L RAIL

### Features

- Materials: 1.2mm cool rolled steel.
- Color: black/gray
- Features: adjustable mounting distance
- Surface finish: Degreasing, phosphoric, water cleaning, electro-static powder coating
- Installing: fixed by square nuts
- Installing position: level fixed on the mounting rail.
- Applications: setting standard 19' equipment

**BSS510145-1**



**BSS510145-2**

## FIXED SHELF

### Features

- Materials: cool rolled steel.
- Color: black/gray
- Features: adjustable mounting distance, uniform distribution thermal via.
- Surface finish: Degreasing, phosphoric, water cleaning, electro-static powder coating
- Installing: fixed by square nuts
- Installing position: level fixed on the mounting rail.
- Applications: setting hosts, monitor or other terminal/ ancillary equipment. Supporting 600 width cabinets.

**BSS510260-1**

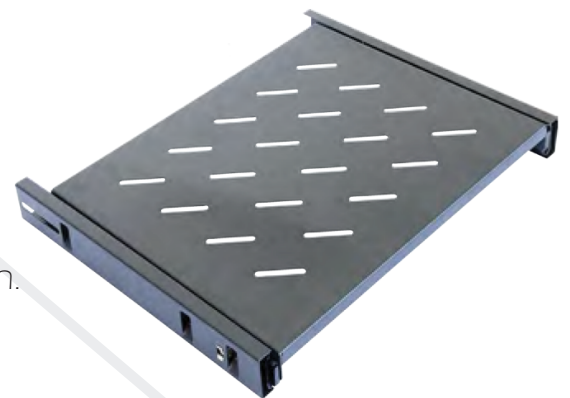


## SLIDING SHELF

### Features

- Materials: 1.2mm cool rolled steel.
- Color: black/gray
- Rail: 12'/14' 2-section slide rail
- Features: sliding smoothly, stall free, disassemble.
- Surface finish: Degreasing, phosphoric, water cleaning, electro-static powder coating
- Installing: fixed by square nuts
- Installing position: level fixed on the mounting rail.
- Applications: setting equipments requiring frequent operation.
- Remarks: Wide sliding shelf for 800mm deep cabinet. Others for 600mm cabinet.

**BSS510460-1**

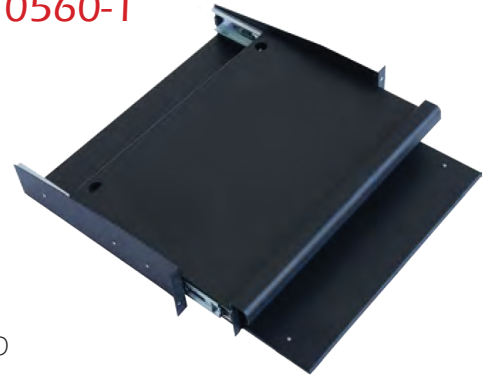


## KEYBOARD PANEL

### Features

- Materials: 1.2mm cool rolled steel.
- Rail: 12'/14' 2-section slide rail
- Load bearing: 20kg
- Color: black/gray
- Features: sliding smoothly, stall free, with slot limit.
- Surface finish: Degreasing, phosphoric, water cleaning, electro-static powder coating
- Installing: fixed by square nuts
- Installing position: level fixed on the mounting rail, according to operational comfort.
- Applications: setting keyboard.

BSS510560-1



Remarks: Wide sliding shelf for 800mm deep cabinet. Others for 600mm cabinet.

## CANTILEVER SLAB

### Features

- Materials: 1.2mm cool rolled steel.
- Color: black/gray
- Features: light in weight, uniform distribution thermal via.
- Surface finish: Degreasing, phosphoric, water cleaning, electro-static powder coating
- Installing: fixed by square nuts
- Installing position: level fixed on the mounting rail or cabinet.
- Applications: setting hosts, monitor or other terminal/ ancillary equipment.
- Supporting 600 width cabinets.

BSS510660-1



## BLANK PANEL

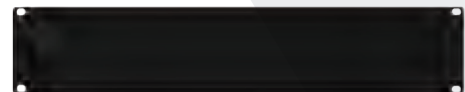
### Features

- Materials: 1.2mm cool rolled steel.
- Color: black/gray
- Features: 3 optional heights for choices.
- Surface finish: Degreasing, phosphoric, water cleaning, electro-static powder coating
- Installing: fixed by square nuts
- Installing position: vertical fixed on the mounting rail.
- Applications: shielding equipment inside, dust-pro, and making cabinet looking neat.

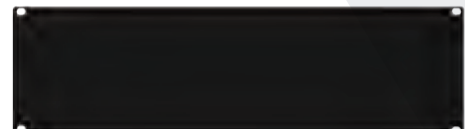
BSS510701-1



BSS510702-1



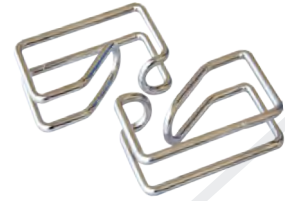
BSS510704-1



## CABLE MANAGEMENT RING (STEEL)

### Features

- Suitable for cable management, efficient&strong



BSS510801

## DIE CASTING HINGE

### Features

- Suitable for cable management Materials: ABS



BSS510802-1

## POWER BAR

### Features

- Specification: 250AC, 10A, 2500W
- Dimension: 1U
- Output: 6way
- Features: suitable for international standard.
- Performance: meet CCEE certificate
- Mounting position: horizontal mounting on mounting rail of cabinet.
- Applications: supply power to equipments in cabinet.

BSS510906-1



BSS510906-2



## COOLING FAN

### Features

- Specification: 220AC, 50/60HZ, medium speed
- Dimension: 120mm\*120mm\*38mm
- Fame made by aluminum
- Air delivery: 195M3/H
- Noise: <48dB
- Color: black
- Performance: meet UL,CSA certificate
- Working temperature: 0-70
- Mounting position: horizontal mounting on the top of cabinet.

BSS511002-8041



BSS511001



BSS511003-6041