



UNLIMITED USAGE

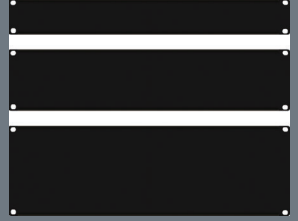
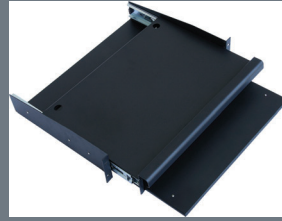
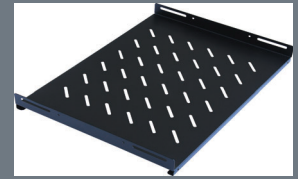
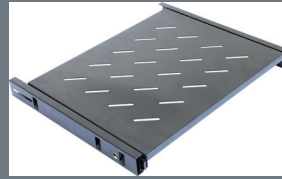
Optimize cable and thermal management for improved network availability with scalable, high-capacity solutions that protect, manage and showcase your network investment



The history of technology is the history of the invention of tools and techniques and is one of the categories of world history. + Technology can refer to methods ranging from as simple as stone tools to the complex genetic engineering and information technology that has emerged since the 1980s. The term technology comes from the Greek word technē, meaning art and craft, and the word logos...

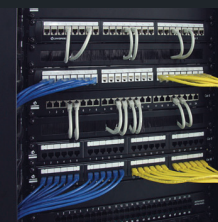
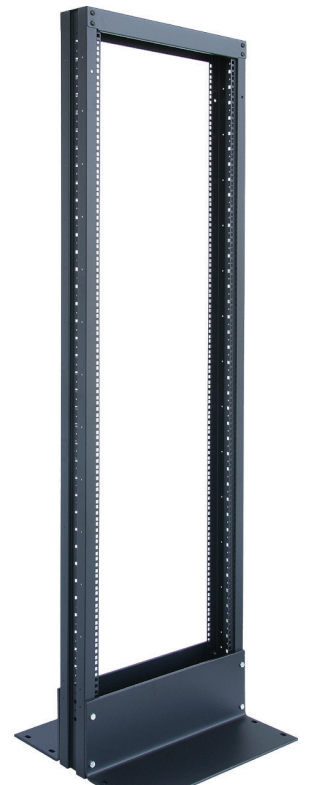
TODAY Blackstone is the future of the network infrastructure technology .





BLACK STONE WALL MOUNT CABINET V LINE DATE RACK

WWW.INFRASTONE.COM



P/N:BSC



BLACK-STONE CABINET

STANDARD

Comply with ANSI/EIA RS-310-D, DIN41491; PART1, IEC297-2, DIN41494; PART7, GB/T3047.2-92 standard.

Compatible with metric, ETSI and 19' international standard.

FEATURES

- Exquisite design with precise dimension and craftsmanship.
 - International popular smoky-gray glass front door.
 - Easily be mounted on wall, or placed on floor after installed castor or feet.
 - Loading capacity: 60KG.
 - Top and bottom wiring channel could be closed.
 - Removable front door and side panel, easily installing and maintaining
- Surface finish: Degreased, acid cleaned, phosphoric, water cleaned, electro-static powder coating, meet ROHS standard.
Optional color: black/gray
Optional accessories.

Cool rolled steel

Thickness: Vertical rail:1.5mm

Else in 1.2mm

Tempered smoky-gray glass with thickness of 5mm.



APPLICATION

Widely used in network system, educational system, broadcasting system and telecommunication system. Suitable for placing server computer and precision electronic equipments.



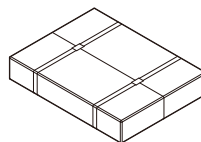
The open base

improves cable management access

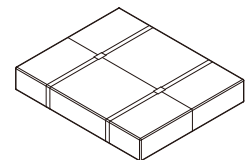
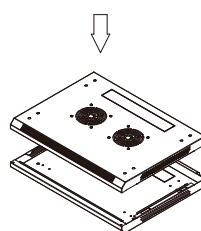


Easily assembled side panel

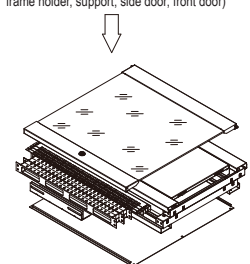
STRUCTURAL (SPLIT TYPE)



A package(with top/bottom plate)



B package(back door, L guide rail, frame, mounting plate, frame holder, support, side door, front door)



vertical cable ladders

are used to attach cable and power distribution units (PDU) in the cabinet



vertical cable trunk

provides additional cable management



Lockable side panels

Are removable with handle for better handing.



Cabinet fans

Cabinets are equipped with four top mounting fans to help airflow for sever cooling.

STANDARD ACCESSORIES

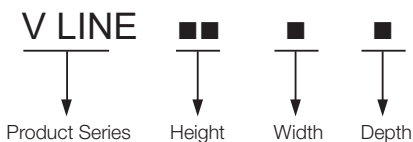
S/N	Specification	Qty	Unit	Material	surface finish	Remark
1	Frame	2	Pcs	1.2mm cold rolled steel	Powder coated	---
2	Front door	1	Pcs	1.2mm cold rolled steel	---	B type door
3	Side door	2	Pcs	1.2mm cold rolled steel	Powder coated	With lock
4	lock	1	Pcs	---	---	---
5	Mounting rail	4	Pcs	1.5mm cold rolled steel	Powder coated	---
6	Mounting plate	1	Pcs	1.2mm cold rolled steel	Powder coated	---
7	Cable inlet cap	2	Pcs	1.2mm cold rolled steel	Powder coated	---
8	Screws &nuts	10	sets	---	---	---
9	wrench	1	Pcs	---	---	---

ORDER INFORMATION

Part No	Capacity (U)	Width (mm)	Depth (mm)	Height (mm)	Carton measurement WxDxH(mm)	Volume (CBM)
VLINE-6-6045-■	6U	600	450	368	670×520×430	0.15
VLINE-9-645-■	9U	600	450	501	670×520×560	0.20
VLINE-12-645-■	12U	600	450	635	670×520×700	0.24
VLINE-15-645-■	15U	600	450	769	670×520×830	0.29
VLINE-18-645-■	18U	600	450	901	670×520×960	0.33
VLINE-6-66-■	6U	600	600	368	670×670×430	0.19
VLINE-9-66-■	9U	600	600	501	670×670×560	0.25
VLINE-12-66-■	12U	600	600	635	670×670×700	0.31
VLINE-15-66-■	15U	600	600	769	670×670×830	0.37
VLINE-18-66-■	18U	600	600	901	670×670×960	0.43

* Please contact us for customized requirement

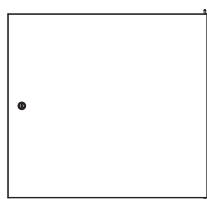
TYPE DESCRIPTION



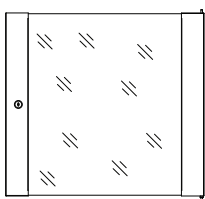
COLOR

■■■■■■■-■■■1
1= Black(RAL9004)
■■■■■■■-■■■2
2= Gray(RAL7044)

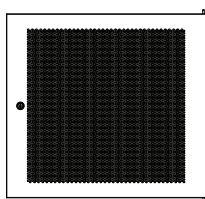
DOORS



1=Steel Casement Door



2=Smoky-grey glass door



3=Perforation steel door with high ventilation level(hexagonal type)

BLACKSTONE CABINET

STANDARD

Comply with ANSI/EIA RS-310-D, DIN41491; PART1, IEC297-2, DIN41494; PART7, GB/T3047.2-92.

Compatible with metric, ETSI and 19' international standard.

FEATURES

- Exquisite design with precise dimension and craftsmanship.
- International popular smoky-gray glass front door.
- Easily be mounted on wall, or placed on floor after installed castor or feet.
- Loading capacity: 60KG.
- Top and bottom wiring channel could be closed.
- Removable front door and side panel, easily installing and maintaining
- Surface finish: Degreased, acid cleaned, phosphoric, water cleaned, electro-static powder coating, meet ROHS standard.
- Optional color: black/gray
- Optional accessories.

MATERIALS

Cool rolled steel

Thickness: Vertical rail:1.5mm

Else in 1.2mm

Tempered smoky-gray glass with thickness of 5mm.

APPLICATION

Widely used in network system, educational system, broadcasting system and telecommunication system. Suitable for placing server computer and precision electronic equipments.

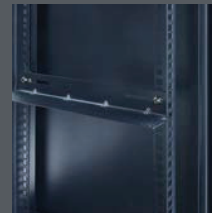
P/N BSC

Double section



vertical cable ladders

are used to attach cable and power distribution units (PDU) in the cabinet



vertical cable trunk

provides additional cable management



Lockable side panels

Are removable with handle for better handing.



Cabinet fans

Cabinets are equipped with four top mounting fans to help airflow for sever cooling.



asily assembled side panel

BLACKSTONE DOUBLE SECTION

STANDARD ACCESSORIES

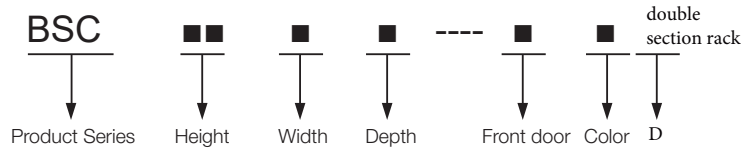
S/N	Specification	Qty	Unit	Material	surface finish	Remark
1	Frame	4	Pcs	1.2mm cold rolled steel	Powder coated	---
2	Front door	1	Pcs	1.2mm cold rolled steel	Powder coated	B type door
3	Side door	2	Pcs	1.2mm cold rolled steel	Powder coated	With lock
4	Back door	1	Pcs	---	Powder coated	---
5	Lock	1	Pcs	1.5mm cold rolled steel	---	---
6	Mounting rail	4	Pcs	1.2mm cold rolled steel	Powder coated	---
7	Mounting plate	1	Pcs	1.2mm cold rolled steel	Powder coated	---
8	Cable inlet cap	2	Pcs	---	Powder coated	---
9	Screws &nuts	10	sets	---	---	---
10	wrench	1	Pcs	---	---	---

ORDER INFORMATION

Part No	Capacity (U)	Width (mm)	Depth (mm)	Height (mm)	Carton measurement WxDxH(mm)	Volume (CBM)
BSCD6-6-55-	6U	600	550	368	670×620×430	0.18
BSCD9-6-55	9U	600	550	501	670×620×560	0.23
BSCD12-6-55	12U	600	550	635	670×620×700	0.29
BSCD15-6-55	15U	600	550	789	670×620×830	0.34

* Please contact us for customized requirement

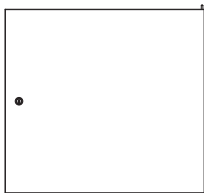
TYPE DESCRIPTION



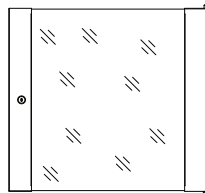
COLOR

	1
1= Black(RAL9004)	
	2
2= Gray(RAL7044)	

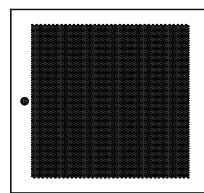
DOORS



1=Steel Casement Door



2=Smoky-grey glass door



3=Perforation steel door with high ventilation level(hexagonal type)

BLACKSTONE EASY8 OPEN RACK

STANDARD

Comply with ANSI/EIA RS-310-D, DIN41491; PART1, IEC297-2, DIN41494; PART7, GB/T3047.2-92.

Compatible with metric, ETSI and 19' international standard.

FEATURES

- Modular design, easily assemble and disassembl for delivery, low cost.
- Various optional accessories according to requirements.
- Static load: 150kg
- Lever of protection: IP20
- Surface finish: Degreased, acid cleaned, phosphoric, water cleaned, electro-static powder coating, meet ROHS standard.
- Optional color: black/gray
- Optional accessories.

MATERIALS

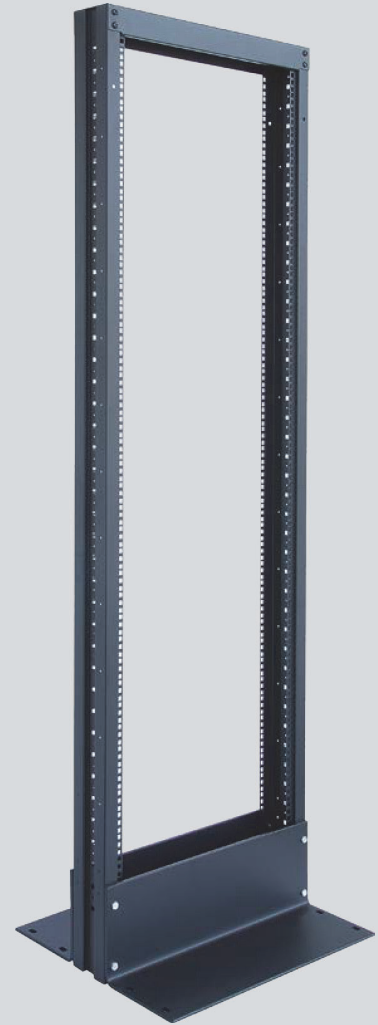
Cool rolled steel

Thickness: Vertical rail:1.5mm

Else in 1.2mm

APPLICATION

Widely used in network system, educational system, broadcasting system and telecommunication system. Suitable for placing server computer and precision electronic equipments.



vertical cable ladders

are used to attach cable and power distribution units (PDU) in the cabinet



The open base

improves cable management access



Lockable side panels

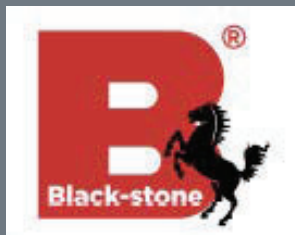
Are removable with handle for better handing.

P/N:

EASY8

 - U SIZE

INFRASTONE LLC USA



network cabinet does the job for offices and retail environments that require a secure, heavy-duty wall-mounted storage option for standard 19" rack-mount servers and networking equipment. This cabinet can also be used freestanding. Choose from 6U/9U/12U/15U/18U sizes to custom-configure your job.