

Server Spring 42U Rack Cabinet

For High Density
networking and blade applications

SER42

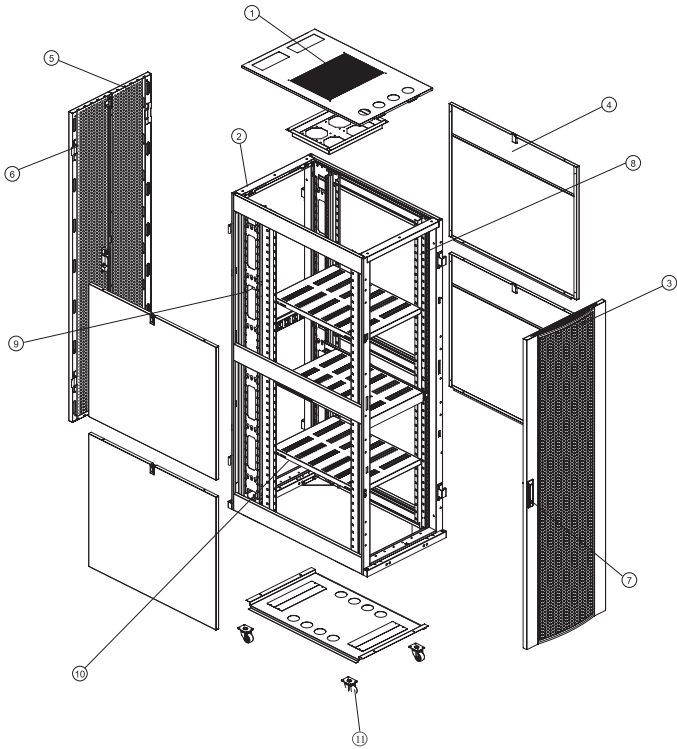


Unlimited usage

Enclosure and rack systems

“ServerSpring

DETAILS ON
EXPLODED
VIEW



- 1.Top Cover
- 2.Frame
- 3.Front Door
- 4.Side Door
- 5.Left Rear Door
- 6.Right Rear Door
- 7.Lock
- 8.Mounting Rail
- 9.Vertical cable management
- 10 Fixed shelf
- 11.Heavy duty caster

FEATURES



- Surface finish: degreasing, pickling, phosphoric, powder coating .
- The thickness of powder coating is 80µm-100µm .
- Curved perforated front door and double-section rear door enable equipment protection, reliable operation with ventilation rate above 80% . Double-section side panels, each panel can be easily assembled separately.
- Top and bottom wiring channel can be closed and adjustable.
- Backside with a pair of vertical cable management .
- Mounting rail with U mark.
- Efficient and solid cabinet connection.
- With earthing kits.
- Advanced lock .
- Optional plinth to meet under-base wiring, ventilation and rat-proof . Adjustable feet and heavy duty castors are available at the same time , static loading: 1000KG .
- Full range of optional accessories.

infostone®

Unlimited usage

www.infraStone.com

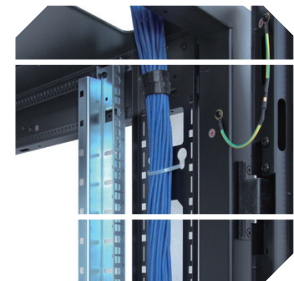
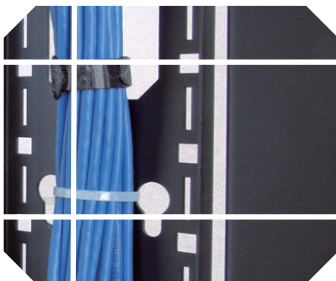
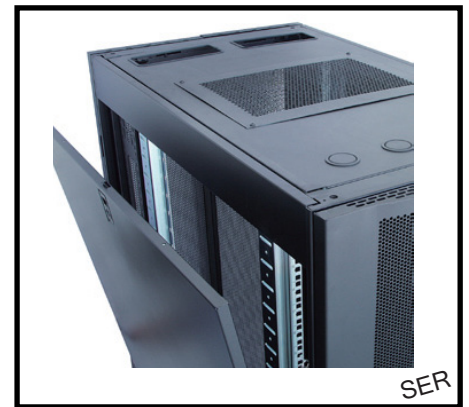
Enclosure and rack systems



“ServerSpring

Infraston ServerSpring High-density server and networking applications demand a rack infrastructure that can mount a mix of different equipment and support high-capacity cable management in an efficient, flexible design and easy Installation .

Server Spring series Servering Enclsures, provide a proper environment for the server and storage equipments with professional ventilation structure as well the heavy duty construction to house the heavy loads of servering equipments.




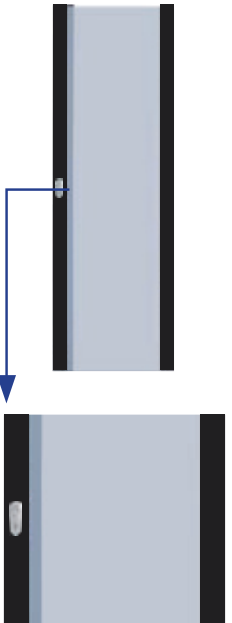

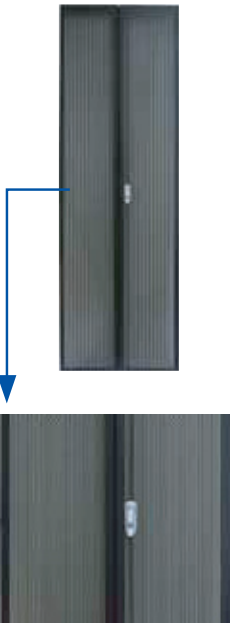
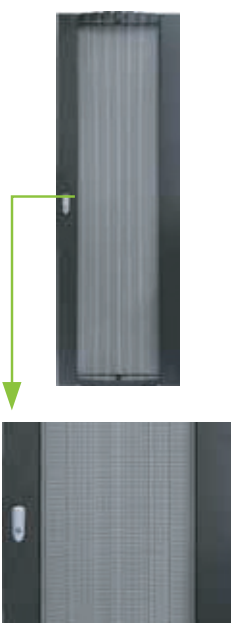

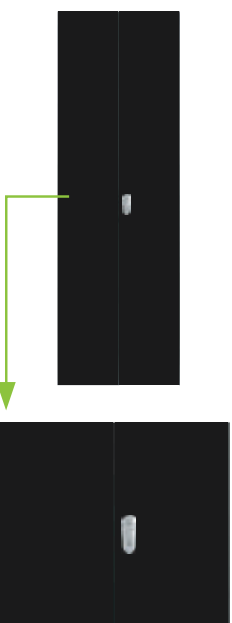
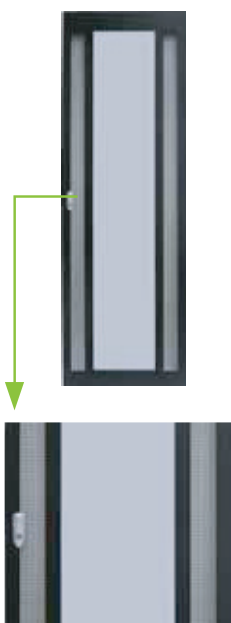
infostone[®]

Unlimited usage

www.infrastone.com

Enclosure and rack systems

DOORS

A= steel casement door	B= smoky-gray glass door	D= perforation steel door	F= double swing steel door (perforated)
			
H= curved concavo-convex perforation steel door (hexagonal Type)	I= concavo-convex perforation steel door (hexagonal Type)	J= double swing steel door	N= Smoky-gray glass door with both sides punched
			

Enclosure and rack systems

INFRASTONE SER CABINET

P/N:SER

 ORDER INFORMATION

Part No	Capacity/U	Width/mm	Depth/mm	Height/mm	Carton measurement			Volume/CBM
					Width/m	Depth/m	Height/m	
SER37-66-##☆	37U	600	600	1800	0.65	0.65	1.80	0.7605
SER37-68-##☆		600	800		0.65	0.85		0.9945
SER37-610-##☆		600	1000		0.65	1.05		1.2285
SER37-88-##☆		800	800		0.85	0.85		1.3005
SER37-810-##☆		800	1000		0.85	1.05		1.6065
SER42-66-##☆	42U	600	600	2000	0.65	0.65	2.00	0.845
SER42-68-##☆		600	800		0.65	0.85		1.105
SER42-610-##☆		600	1000		0.65	1.05		1.365
SER42-88-##☆		800	800		0.85	0.85		1.445
SER42-810-##☆		800	1000		0.85	1.05		1.785
SER42-81200-		800	1200		0.85	0.65		0.9295
SER47-68-##☆	47U	600	800	2200	0.65	0.85	2.20	1.2155
SER47-610-##☆		800	1000		0.65	1.05		1.5015
SER47-88-##☆		800	800		0.85	0.85		1.5895
SER47-810-##☆		800	1000		0.85	1.05		1.9635



Unlimited usage

www.infraStone.com

Enclosure and rack systems

STANDARD ACCESSORIES

S/N	Specification	Qty	Unit	Material	Surface finish	Remark
1	Top cover	1	Pcs	1.5mm cold rolled steel	Powder coated	--
2	Frame	2	Pcs	2.0mm cold rolled steel	Powder coated	--
3	Front door	1	Pcs	1.5mm cold rolled steel	Powder coated	K type door
4	Side panel	4	Pcs	1.5mm cold rolled steel	Powder coated	With lock
5	Left rear door	1	Pcs	1.5mm cold rolled steel	Powder coated	F type door
6	Right rear door	1	Pcs	1.5mm cold rolled steel	Powder coated	F type door
7	Lock	6	Pcs	--	--	--
8	Mounting rail	4	Pcs	2.0mm cold rolled steel	Powder coated	--
9	Mounting angle	6	Pcs	1.5mm cold rolled steel	Powder coated	--
10	Spacer	12	Pcs	--	--	Cabinet width:800mm
11	Fixed shelf	2	Pcs	1.5mm cold rolled steel	Powder coated	--
12	Vertical cable management	1	Pcs	1.5mm cold rolled steel	Powder coated	--
13	Heavy duty castors	4	Pcs	--	--	--
14	Feet	4	sets	--	--	--
15	Cage and nuts	40	Pcs	--	--	--
16	Fan	4	Pcs	--	--	--
17	6-way power strip	1	Pcs	--	--	2 fans for 600mm depth
18	Wrench	1	Pcs	--	--	--

Power Distribution Unit

- Conform to DIN49440 and DIN49441
- Maximum 16A 250V AC current capacity, 3.5KW For EU
- Maximum 10A 110V AC current capacity, 2.5KW For US
- Lighted master switch
- Standard 1U 8 output and 1.5U 6 output with surge protect
- 2m power cord, other length upon request
- Color: aluminum or plastic frame in black
- RoHS compliant



infostone®

Unlimited usage

www.infraStone.com