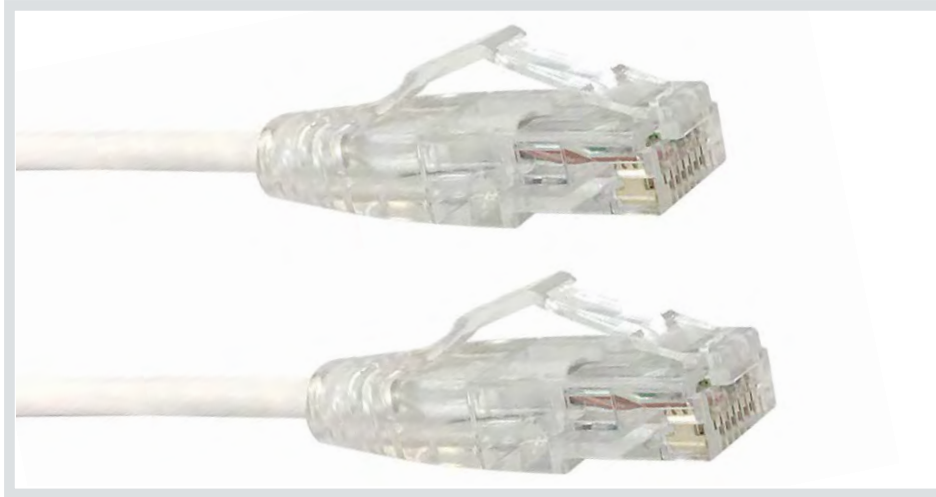


## Black-stone CAT 6 UTP Patch Cord

PART NO. : BSAC1M600-WH



### DISCRIPTION

Blackstone Cat 6 UTP Patch Cords, with a compact plug and boot, feature a narrow profile to support traditional and high-density panels and switches. The snagless plug design makes the patch cords an excellent choice in environments where moves, adds, and changes are frequent. Shorter boot provides a shorter installed bend radius, ideal for applications with limited space.

### FEATURES

- Tested and verified to meet Cat 6 component requirements for TIA, ISO/IEC, and EN standards.
- Compact plug and boot promotes shorter installed bend radius, ideal for limited depth applications.
- Snag less plug design prevents tab breakage.
- Integrated strain-relief.
- Stranded conductor for longer flex-life.
- T568B wiring to function in either T568A or T568B applications.
- All patch cords are backwards compatible with earlier ANSI/TIA category ratings.
- Channel performance verified by third-party testing in 4-connector, 100-meter channel.
- Accepts clip-on colored boot markers for network identifications.

### SPECIFICATION

Patch cords shall meet or exceed electrical transmission performance requirements of links and channels as described in ANSI/TIA-568.2-D (Cat 6) and ISO/IEC 11801-1 (Class E) and EN 50173-1 (Class E).

Patch cords shall be 24 AWG stranded conductor with an 8-position modular plug on each end. The cords shall include a narrow-profile boot that allows for easy cord removal without snagging.

The cords shall be available in standard lengths of 1, 2, 3, 10, 25, and 50 feet. Patch cord plug shall be clear and contacts shall have industry-standard, ANSI/TIA-1096-A compliant 50 micro inches of gold plating.

### DESIGN CONSIDERATIONS

- ANSI/TIA channel performance limits total length of patching and equipment cords to 32 feet (10 meters) per ANSI/TIA-568.2-D or 88.6 feet (27 meters) in a MUTOA application.
- A variety of colors for color coding or organization.
- Available in seven standard lengths (custom lengths available).

### Performance Specification

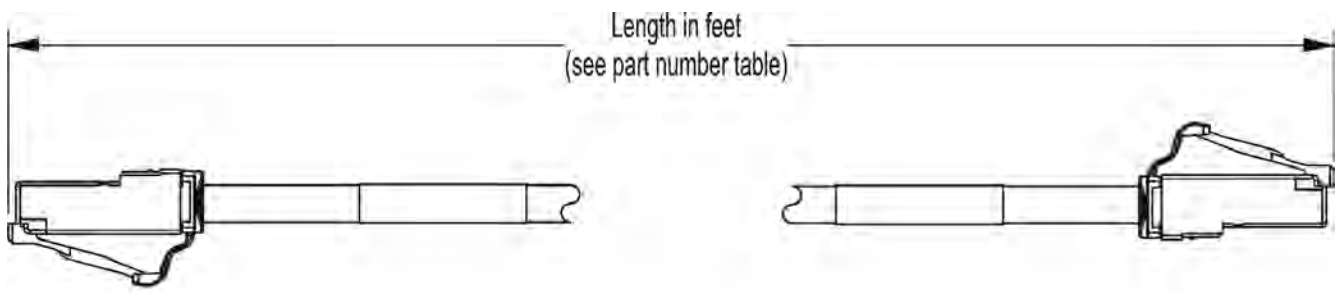
Outer Diameter (O.D.):	0.225"
Materials	24 AWG UTP stranded conductor, modular non-keyed, 8-position, 8-conductor plug, 94V-0 rated
Colors	White, yellow, red, blue, green, gray, light blue and black
Storage Temperature	-20 °C to +70 °C
Installation Temperature	0 °C to +50 °C
Operating Temperature	-20 °C to +60 °C

Black-stone

## STANDARDS & REGULATIONS

- ANSI/TIA-568.2-D (Cat 6)
- ISO/IEC 11801-1 (Cat 6)
- EN 50173-1 (Cat 6)
- ANSI/TIA-1096-A (formerly FCC Part 68)
- CE CERTIFIED
- IEEE 802.3bt PoE Type 1, 2, 3, 4 (90 watts max)
- Cisco UPOE, UPOE+ (90 watts max)
- Power over HDBaseT™ PoH (95 watts max)
- For 100 watt applications - Up to 100 cables in a bundle
- RoHS 3

## PRODUCT SPECIFICATIONS



## ORDER INFORMATION

Part number guide example for Black-stone CAT6 UTP Patch Cord

Data cable	Metric System		Length		Category	Color	Jacket
	Europe and Middle East	USA	M	FT			
BS	AC	US	0.15M 0.3M 0.5M 1M 3M 5M 10M	1F 2F 3F 10F 25F 50F	CAT6	BU (Blue) YL (Yellow) GR (Green) BL (Black) WH (White) G (Gray) RD (Red)	PVC LZSH CM
BS		US		1F	600	WH	LZSH

PN://BS 1F 600 WH LZSH PB://BSUS600-WH-LZSH

Description	Europe and Middle East						
	Color						
	White	Yellow	Grey	Red	Black	Green	Blue
Cat 6 UTP Patch Cable, 0.15m	BSAC015M600-Wh	BSAC015M600-YL	BSAC015M600-G	BSAC015M600-RD	BSAC015M600-BL	BSAC015M600-GR	BSAC015M600-BU
Cat 6 UTP Patch Cable, 0.3m	BSAC03M600-Wh	BSAC03M600-YL	BSAC03M600-G	BSAC03M600-RD	BSAC03M600-BL	BSAC03M600-GR	BSAC03M600-BU
Cat 6 UTP Patch Cable, 0.5m	BSAC05M600-Wh	BSAC05M600-YL	BSAC05M600-G	BSAC05M600-RD	BSAC05M600-BL	BSAC05M600-GR	BSAC05M600-BU
Cat 6 UTP Patch Cable, 1m	BSAC1M600-WH	BSAC1M600-YL	BSAC1M600-G	BSAC1M600-RD	BSAC1M600-BL	BSAC1M600-GR	BSAC1M600-BU
Cat 6 UTP Patch Cable, 3m	BSAC3M600-WH	BSAC3M600-YL	BSAC3M600-G	BSAC3M600-RD	BSAC3M600-BL	BSAC3M600-GR	BSAC3M600-BU
Cat 6 UTP Patch Cable, 5m	BSAC5M600-WH	BSAC5M600-YL	BSAC5M600-G	BSAC5M600-RD	BSAC5M600-BL	BSAC5M600-GR	BSAC5M600-BU
Cat 6 UTP Patch Cable, 7m	BSAC7M600-WH	BSAC7M600-YL	BSAC7M600-G	BSAC7M600-RD	BSAC7M600-BL	BSAC7M600-GR	BSAC7M600-BU
Cat 6 UTP Patch Cable, 10m	BSAC10M600-WH	BSAC10M600-YL	BSAC10M600-G	BSAC10M600-RD	BSAC10M600-BL	BSAC10M600-GR	BSAC10M600-BU
	USA						
Cat 6 UTP Patch Cable, 1ft	BSUS1F600-WH	BSUS1F600-YL	BSUS1F600-G	BSUS1F600-RD	BSUS1F600-BL	BSUS1F600-GR	BSUS1F600-BU
Cat 6 UTP Patch Cable, 2ft	BSUS2F600-WH	BSUS2F600-YL	BSUS2F600-G	BSUS2F600-RD	BSUS2F600-BL	BSUS2F600-GR	BSUS2F600-BU
Cat 6 UTP Patch Cable, 3ft	BSUS3F600-WH	BSUS3F600-YL	BSUS3F600-G	BSUS3F600-RD	BSUS3F600-BL	BSUS3F600-GR	BSUS3F600-BU
Cat 6 UTP Patch Cable, 10ft	BSUS10F600-WH	BSUS10F600-YL	BSUS10F600-G	BSUS10F600-RD	BSUS10F600-BL	BSUS10F600-GR	BSUS10F600-BU
Cat 6 UTP Patch Cable, 25ft	BSUS25F600-WH	BSUS25F600-YL	BSUS25F600-G	BSUS25F600-RD	BSUS25F600-BL	BSUS25F600-GR	BSUS25F600-BU
Cat 6 UTP Patch Cable, 50ft	BSUS50F600-WH	BSUS50F600-YL	BSUS50F600-G	BSUS50F600-RD	BSUS50F600-BL	BSUS50F600-GR	BSUS50F600-BU

**Note:** Other lengths and colors (such as orange and violet) are available by special order, please contact customer service for more information.