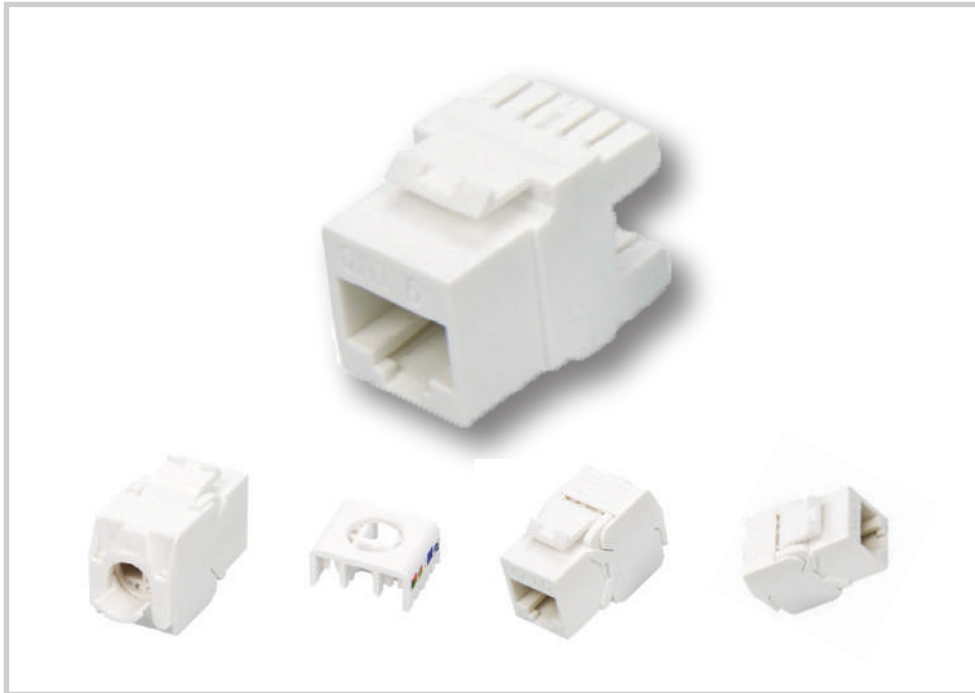


## Black-stone Keystone Jack

Cat6 RJ45, Unshielded, Dust Cap ,  
PoE/PoE+ Compliant, TAA, CE White



**PART NUMBER: BSK-JB8000500**

### Highlights

- RJ45 fast Installation with Special Punch Tool or Crimping Tool.
- Supports PoE+ to save you expense and effort of powering PoE devices individually.
- Specially designed to prevent spark-gap erosion that can affect transmission.
- Disperses EMI/RFI line noise that can destroy data and affect equipment performance.
- Includes dust cap to protect end from dust and debris when not in use.

### Applications

- Connect a Cat6 network with PoE+ devices mounted in areas that are difficult to reach or have no electrical outlets.
- Set up indoor digital signage in offices, hotels, restaurants, bars, bus stations and airports.

### Package Includes

BSK-JB8000500 Keystone Jack  
Cat6 Unshielded,  
TAA Dust cap  
Quick Start Guide

## Keystone Jack

### Features

Keystone Jack Strengthens Your High-Speed CAT6A Network fast Installation with Special Punch Tool or Crimping Tool. Ideal for Cat6 premise wiring, the RJ45 keystone jack snaps into wall plates, patch panels and surface-mount boxes and works with all shielded Cat6a cables. A dust cap protects the jack from dust and other contaminants when not in use.

Specifically Designed for Use in Surveillance, VoIP and Other PoE+ Applications To maximize performance with PoE (Power over Ethernet) applications, this keystone jack is specifically designed to prevent spark gap erosion that degrades the plug and jack contacts over time and can negatively influence data and/or power transmission capabilities. Connecting PoE devices saves you the expense and effort of purchasing, connecting and installing individual power supplies for each device.

Designed for minimal EMI areas, this unshielded keystone jack provides efficient connectivity without the added bulk of shielding, ensuring smooth, dependable network performance.

TAA-Compliant, CE

## Specifications

### OVERVIEW

Part number	BSK-JB8000500
Product Type	Tool
Technology	Cat6

### PHYSICAL

Color	White
Connector Color	White
Housing Color	White; Gray
Shipping Dimensions (hwd / in.)	L 21" x W 12.3" x H 9.21"
Shipping Dimensions (hwd / cm)	L 53.5 cm x W 31.3cm x H 23.4cm
Shipping Weight (lbs.)	16.60lbs
Shipping Weight (kg)	7.60KG
Unit Dimensions (hwd / in.)	0.760 x 0.860 x 1.350
Unit Dimensions (hwd / cm)	1.92 x 2.19 x 3.43

### ENVIRONMENTAL

Operating Temperature Range	14° to 140°F (-10° to 60°C)
Storage Temperature Range	-40° to 154°F (-40° to 68°C)
Relative Humidity	10% to 90% RH, Non-Condensing

### CONNECTIONS

Number of Ports	1
Side A - Connector 1	RJ45 (FEMALE)
Side B - Connector 1	110 IDC
PoE Type	Type 4 High-Power (100W, IEEE 802.3bt)

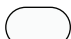
### STANDARDS & COMPLIANCE

Product Compliance	(TT568A/T568B)
--------------------	----------------

### WARRANTY & SUPPORT

Product Warranty Period (Worldwide)	Lifetime limited warranty
-------------------------------------	---------------------------

- Unshielded module colors to choose from :

PN:BSK-JB8000500-A  
 COLOR : White 





# BLACKSTONE Keystone Jack Installation Guide

JACK PIN DESIGNATION	TIA/EIA T568A	TIA/EIA T568B
	1 White/Green	White/Orange
	2 Green	Orange
	3 White/Orange	White/Green
	6 Orange	Green
	4 Blue	Blue
	5 White/Blue	White/Blue
	7 White/Brown	White/Brown
8 Brown	Brown	

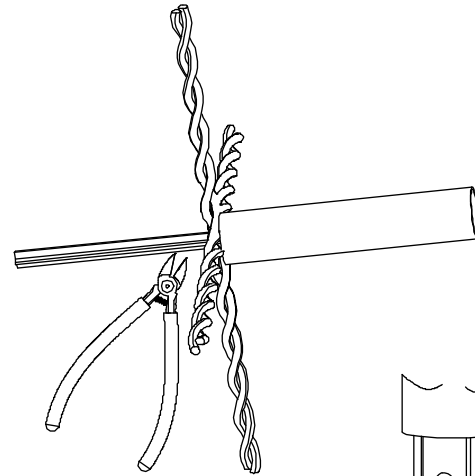
## 1. Prepare the Cable:

Strip approximately 40mm of the cable jacket using a suitable stripping tool.



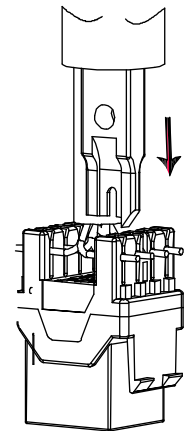
## 2. Organize the Wires

Separate the wires into four pairs and carefully remove the cross filler using diagonal pliers.



## 3. Terminate the Cables

Punch down the wires onto the Krone/110 IDC connector following the TIA/EIA-568A or TIA/EIA-568B wiring standard as indicated on the instruction label.



## 4. Secure the Connection

Slide the plastic cap over the solid cable to securely cover the IDC portion of the keystone jack.

